

Distances shown on this plan are ground distances and can be converted to grid distances by multiplying by the combined scale factor of 0.999913.

Bearings are grid, derived from Can-Net 2016 Real Time Network GPS observations on reference points A and B, shown hereon, having a bearing between them of N48°47'30"W and are referenced to MTM Zone 9 (76°30' West Longitude) NAD-83 (CSRS)(2010).

For comparison purposes, bearings shown on P1 are astronomic bearings and bearings shown on P2 are Grid - UTM Zone 18 NAD83 (CSRS)(1997).

Coordinates are derived from Can-Net 2016 Real Time Network GPS observations referenced to MTM Zone 9 (76°30' West Longitude) NAD-83 (CSRS)(2010).

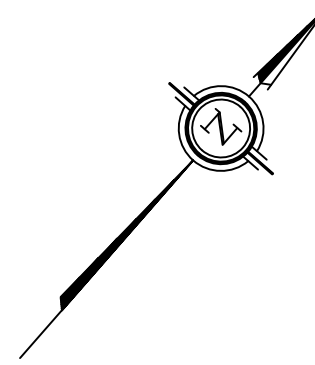
Coordinate values are to urban accuracy in accordance with O. Reg. 216/10.

. ORP A Northing 4976339.61 Easting 337540.48
 . ORP B Northing 4976578.01 Easting 337812.76

Caution: Coordinates cannot, in themselves, be used to re-establish corners or boundaries shown on this plan.

DRAFT

LOT 4
 PIN 05236 -- 0050



I REQUIRE THIS PLAN TO BE DEPOSITED UNDER THE LAND TITLES ACT.
 DATE: _____

 BRIAN KERR
 ONTARIO LAND SURVEYOR

PLAN 27R-
 RECEIVED AND DEPOSITED
 DATE: _____

 REPRESENTATIVE FOR
 LAND REGISTRAR FOR THE
 LAND TITLES DIVISION OF
 LANARK NO. 27.

SCHEDULE

AREA (Sq.m.)	PART	LOT	CONCESSION	PIN
8463	1	PART OF LOT 4	8	PART OF 05236-0050
8463	2	PART OF LOT 4	8	PART OF 05236-0050
8463	3	PART OF LOT 4	8	PART OF 05236-0050

PLAN OF SURVEY OF

**PART OF LOT 4
 CONCESSION 8**
 GEOGRAPHIC TOWNSHIP OF
NORTH ELSMSLEY
 NOW IN THE TOWNSHIP OF
DRUMMOND-NORTH ELSMSLEY
 COUNTY OF LANARK
 Surveyed by Annis, O'Sullivan, Vollebakk Ltd.

Scale 1 : 750



Metric

DISTANCES AND COORDINATES SHOWN ON THIS PLAN ARE IN METRES AND CAN BE CONVERTED TO FEET BY DIVIDING BY 0.3048.

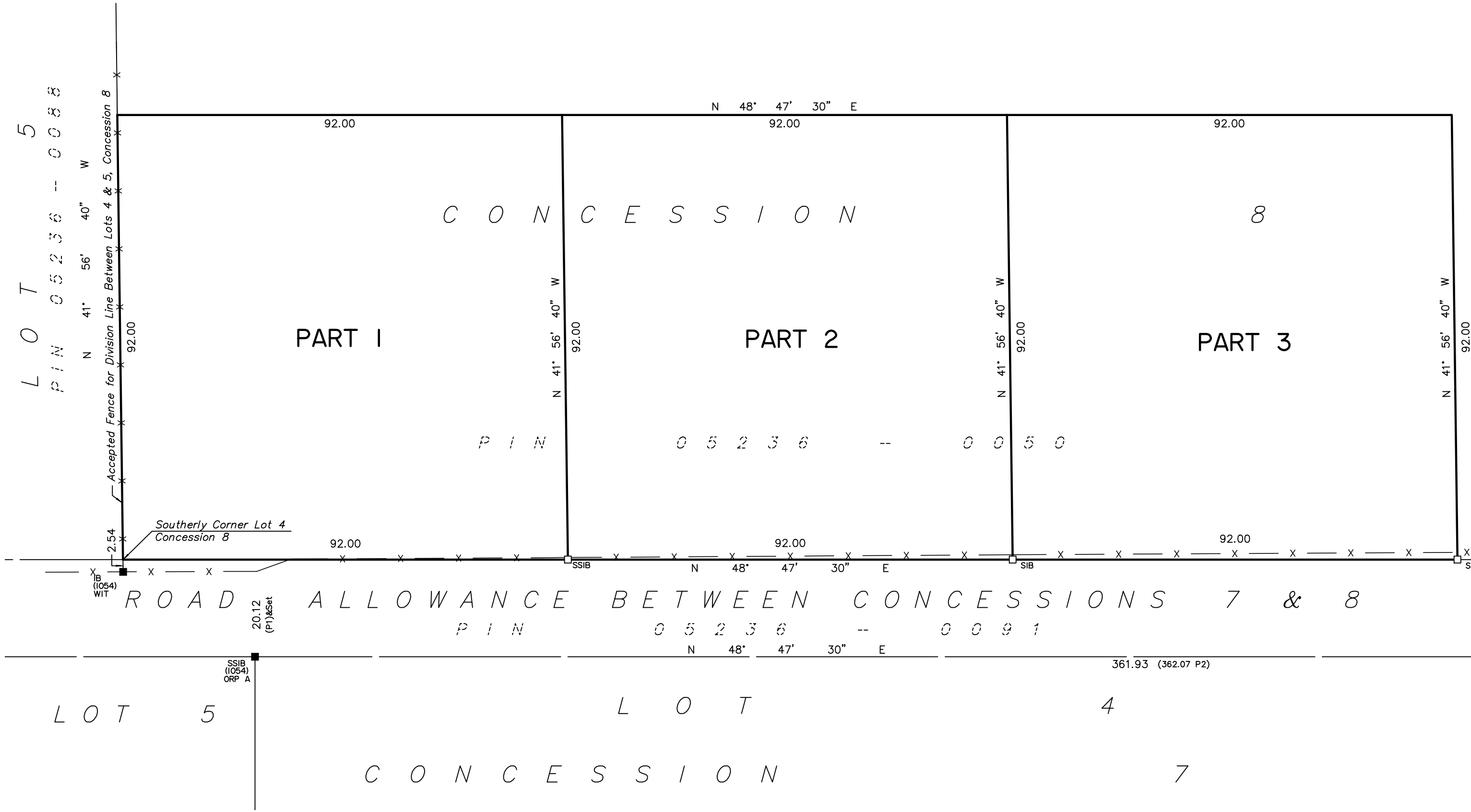
Surveyor's Certificate

- I CERTIFY THAT :
1. This survey and plan are correct and in accordance with the Surveys Act, the Surveyors Act and the Land Titles Act and the regulations made under them.
 2. The survey was completed on the __ day of _____, 2020.

 Date Brian Kerr
 Ontario Land Surveyor

Notes & Legend

- Denotes Survey Monument Planted
- " Survey Monument Found
- SIB " Standard Iron Bar
- SSIB " Short Standard Iron Bar
- IB " Iron Bar
- (WIT) " Witness
- (AOG) " Annis, O'Sullivan, Vollebakk Ltd.
- Meas. " Measured
- (P1) " Plan 27R-3451
- (P2) " Plan 27R-11087



ANNIS, O'SULLIVAN, VOLLEBEKK LTD.
 136 Prescott Street, Box 1340
 Kemptville, Ontario K0G 1J0
 Phone: (613) 258-1717 / Fax: (613) 258-4475
 Email: Kemptville@aovltd.com

Ontario Land Surveyors