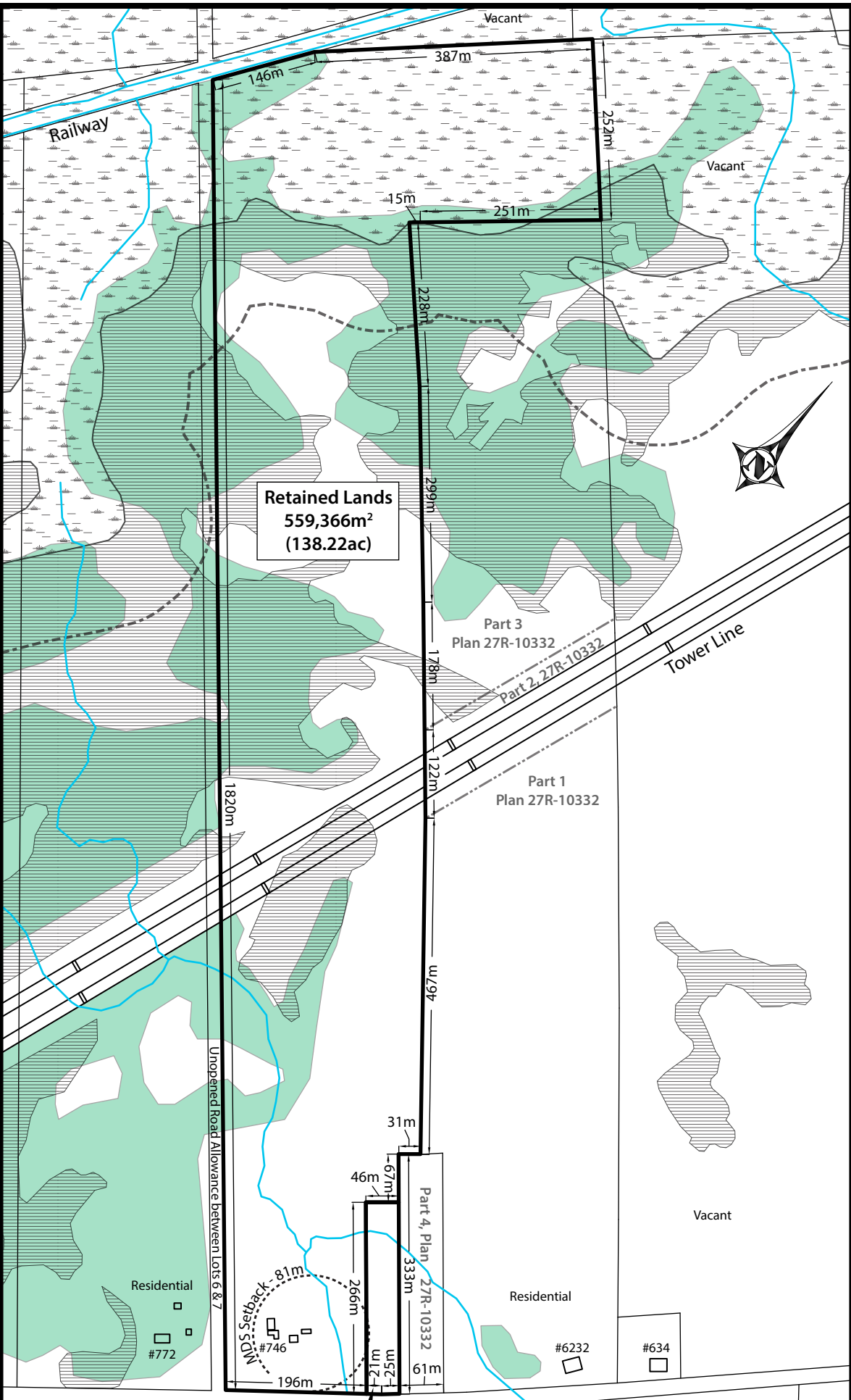
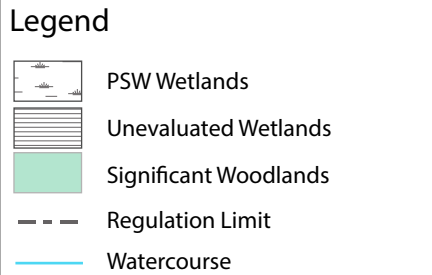
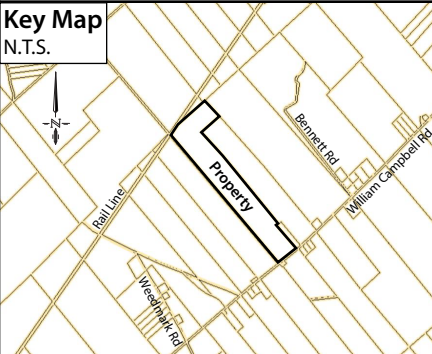


# Smith Severance Sketch

746 William Campbell Road  
Part Lot 6, Concession 7  
Township of Montague  
COUNTY OF LANARK



**Notes:**

1. Location of the watercourses, PSW wetlands and unevaluated wetlands derived from the RVCA Mapping and are shown approximately.
2. Location of the significant woodlands derived from the Township of Montague Official Plan Schedule B and are shown approximately.
3. Boundary and dimensions of the property derived in part from Plan 27R-10332 completed by George Bracken in October of 2013.

Version Date: March 17, 2020 | File No. 21-073

