

PLAN 27R-11735  
 RECEIVED AND APPROVED  
 DATE: Aug 23 2021  
 V. Dietz

THIS PLAN IS FOR THE PART OF LOT 19 AND PART OF LOT 20 IN CONCESSION 6, COUNTY OF LANARK.

BEARING NOTE:  
 BEARINGS AND DISTANCES ARE GIVEN IN DECIMAL DEGREES AND FEET.  
 CURVED LINES ARE APPROXIMATELY LOCATED AND THE EXACT BEARING AND DISTANCE WILL BE DETERMINED BY THE SURVEYOR ON THE GROUND.  
 ALL DISTANCES ARE TO THE CENTER OF THE LINE UNLESS OTHERWISE NOTED.

PLAN OF SURVEY  
 of PART OF  
**LOT 19**  
 CONCESSION 6  
 IN THE  
 TOWNSHIP OF MONTAGUE  
 COUNTY OF LANARK

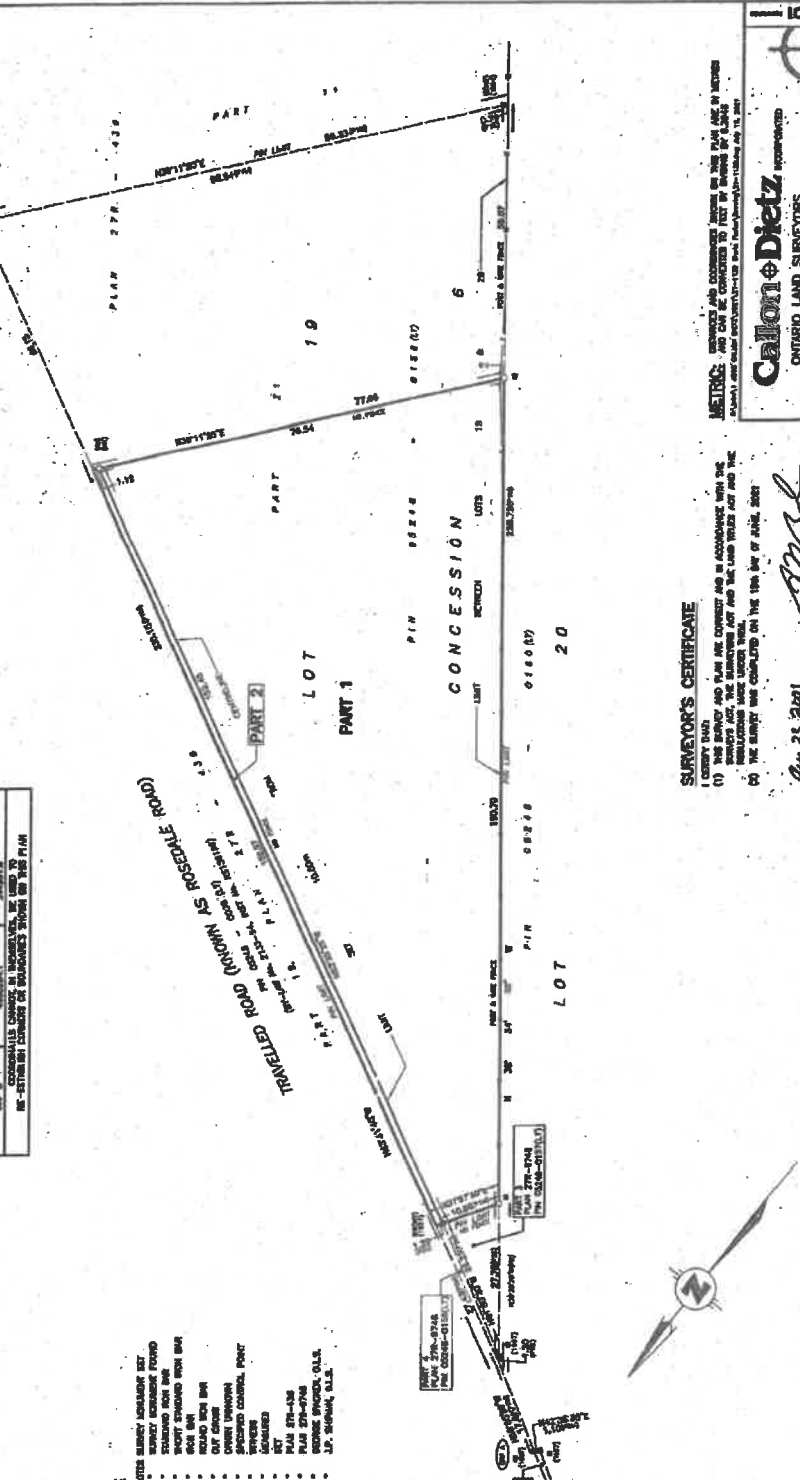
PART	LOT	Part of '1'	'2'	'3'	P.L.K. NO.
1	19				1006-03
2	20				1006-03

INTERSECTION DATA

POINT #	BEARING	DISTANCE
1	344.9911	104.4000
2	163.0000	104.4000
3	215.2631	104.4000
4	335.0000	104.4000

POINT #	BEARING	DISTANCE
5	163.0000	104.4000
6	344.9911	104.4000

LEGEND:  
 1 - BOUNDARY MARKING SET  
 2 - SURVEY STATION  
 3 - 3/4" BENCH MARK  
 4 - 1/4" BENCH MARK  
 5 - 1/2" BENCH MARK  
 6 - ROAD MARK  
 7 - CORNER MARK  
 8 - CHECK MARK  
 9 - 1/4" BENCH MARK  
 10 - 1/2" BENCH MARK  
 11 - 3/4" BENCH MARK  
 12 - 1" BENCH MARK  
 13 - 1 1/2" BENCH MARK  
 14 - 2" BENCH MARK  
 15 - 3" BENCH MARK  
 16 - 4" BENCH MARK  
 17 - 5" BENCH MARK  
 18 - 6" BENCH MARK  
 19 - 8" BENCH MARK  
 20 - 10" BENCH MARK  
 21 - 12" BENCH MARK  
 22 - 14" BENCH MARK  
 23 - 16" BENCH MARK  
 24 - 18" BENCH MARK  
 25 - 20" BENCH MARK  
 26 - 24" BENCH MARK  
 27 - 30" BENCH MARK  
 28 - 36" BENCH MARK  
 29 - 48" BENCH MARK  
 30 - 60" BENCH MARK  
 31 - 72" BENCH MARK  
 32 - 96" BENCH MARK  
 33 - 120" BENCH MARK  
 34 - 144" BENCH MARK  
 35 - 168" BENCH MARK  
 36 - 192" BENCH MARK



**SURVEYOR'S CERTIFICATE**  
 I, GEORGE H. BRONKHORST, a duly licensed surveyor in the Province of Ontario, do hereby certify that the above plan and map are correct and in accordance with the provisions of the Survey Act and the Land Titles Act and the Regulations made thereunder, and that the survey was conducted on the 19th day of June, 2021.  
 G. H. Bronkhorst  
 Surveyor  
 1006-03

**Callion Dietz** accompanied  
 ONTARIO LAND SURVEYORS  
 CALTON PLACE, LONDON  
 NORTH BR  
 513-942-8224  
 calliondietz.com

DATE: Aug 23 2021  
 PLAN: 27R-11735

PLAN 27R-11735  
 RECEIVED AND APPROVED  
 DATE: Aug 23 2021  
 V. Dietz

THIS PLAN IS FOR THE PART OF LOT 19 AND PART OF LOT 20 IN CONCESSION 6, COUNTY OF LANARK.