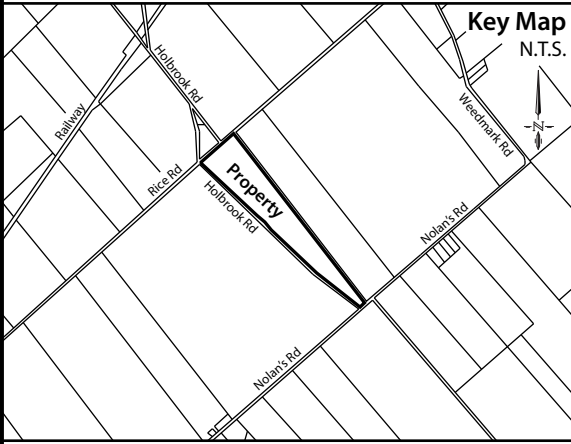


# Jackson Homes Severance Sketch - Holbrook Road Lot

Part Lot 13, Concession 6  
Township of Montague  
COUNTY OF LANARK



## Legend

- Local Wetlands
- Significant Woodlands
- Significant Wildlife Habitat
- Organic Soils
- Watercourse

## Notes:

1. Location of the Local Wetlands, Watercourses and Significant Woodlands derived from the Rideau Valley Conservation Authority Online GIS mapping and are shown approximately.
2. Location of the Significant Wild Life Habitat and Organic Soils derived from the Township of Montague Official Plan Schedules and are shown approximately.
3. The lands to be severed, the location of the steel tower line, and the location of the buried Bell Canada Easement derived from Plan 27R-7830 completed by G.A. Smith Surveying Ltd. in May of 2001.

Version Date: Nov. 23, 2020 | File No. 17-127

**ZANDERPLAN**  
Your rural land planning experts

40 Sunset Boulevard, Perth, ON 613-264-9600

